



## DESIGN, SPACE AND QUALITY AT PRAT GRAN

Coll d'Ordino / Ordino

Price from

€1,750,000

Surface

260 m<sup>2</sup> - 346 m<sup>2</sup>

Units

4

✓ Mountain views

✓ Backyard

✓ Storage

✓ Fireplace

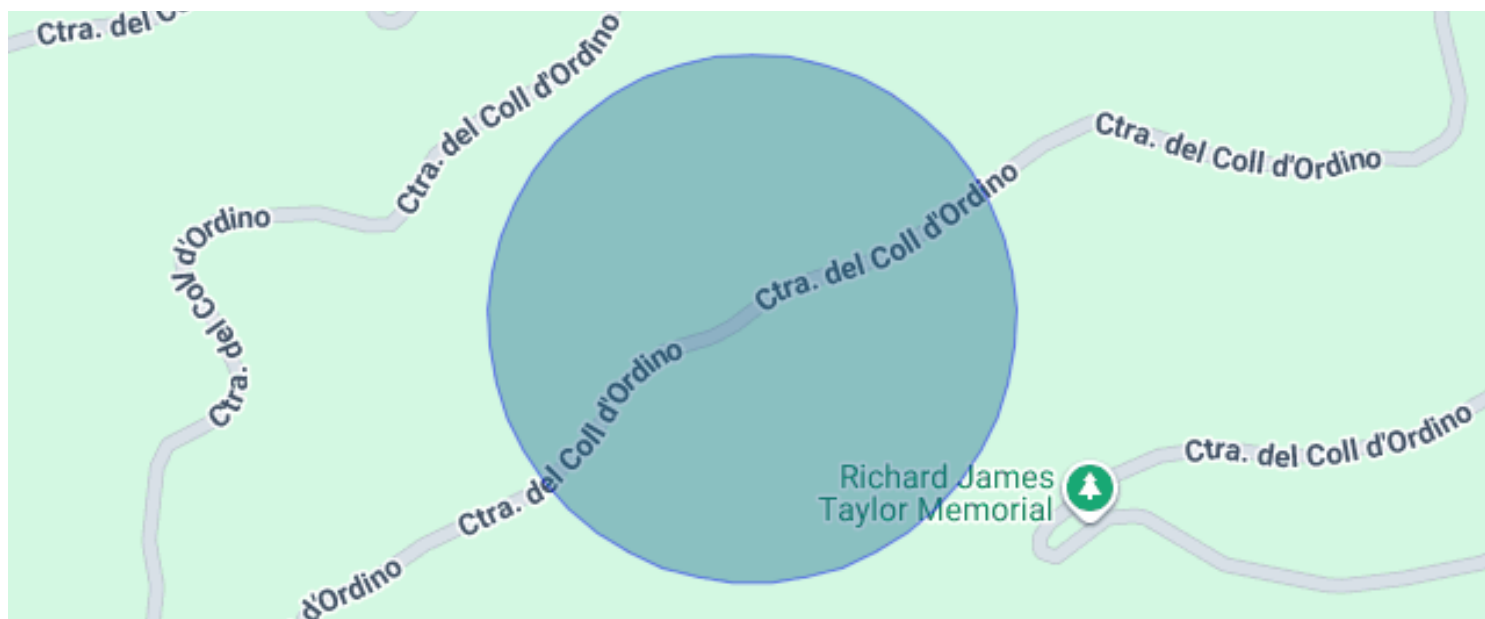
✓ Parking

✓ Terrace

✓ Balcony

✓ Built in closets

✓ Outside



## Coll d'Ordino / Ordino

Residencial Prat Gran is an exclusive development consisting of four high-end semi-detached homes, designed to offer maximum comfort, functionality, and quality of life. Each home has been conceived as a unique space, where contemporary design and smart layout create spacious, bright, and perfectly adapted living environments for modern needs.

The houses are distributed over several levels, allowing a clear separation between day and night areas. On the main floor, open-plan spaces integrate the living room, dining area, and kitchen, creating a warm and practical environment, ideal for both everyday living and entertaining.

The upper floors accommodate the bedrooms, including spacious rooms, dressing areas, and fully equipped bathrooms, designed to provide privacy and comfort. The master suite stands out in particular, with generous spaces that convey a sense of exclusivity and well-being.

Each home also features private outdoor areas, such as terraces, balconies, and gardens, extending the living space outdoors and allowing residents to enjoy the surroundings in total privacy. These areas are designed as a natural extension of the home.

In the basement, the properties offer large private garages, as well as technical rooms, storage areas, and laundry spaces, adding extra functionality and convenience.

The built areas are generous, with homes ranging from approximately 260 m<sup>2</sup> to over 340 m<sup>2</sup>, ensuring spacious and well-distributed interiors.

From a construction perspective, the project focuses on high-quality materials, combining stone, wood, and large glass surfaces that enhance natural light. The result is an elegant, modern architectural ensemble perfectly integrated into its surroundings.

Residencial Prat Gran represents a unique opportunity for those seeking a spacious, modern, and functional home, where every detail has been carefully designed to offer a superior living experience.

Estimated delivery date: second quarter of 2027.

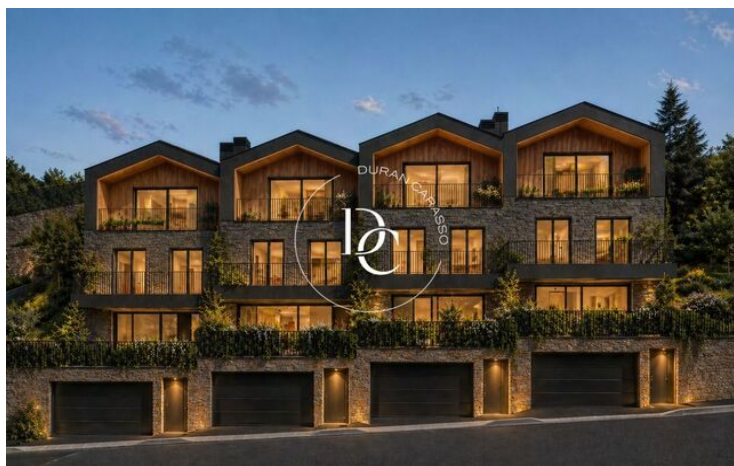
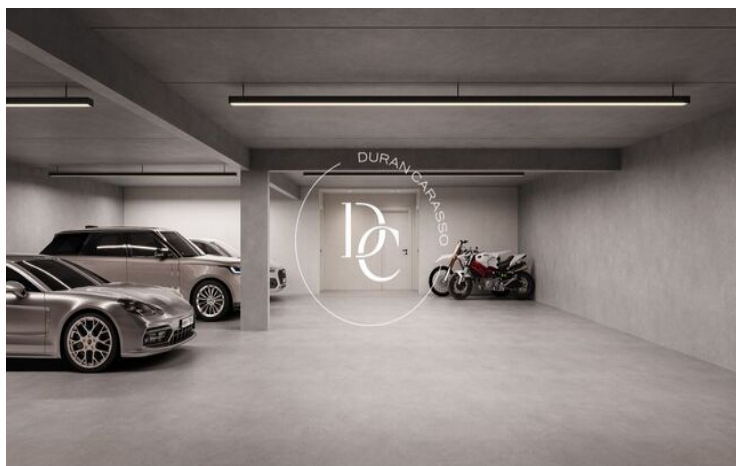
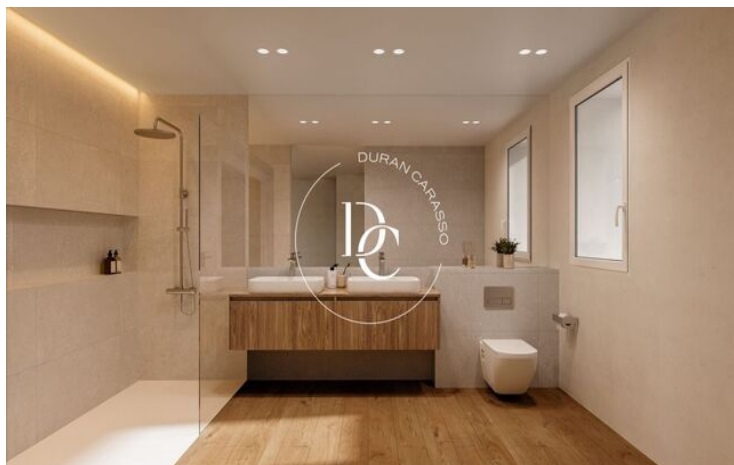
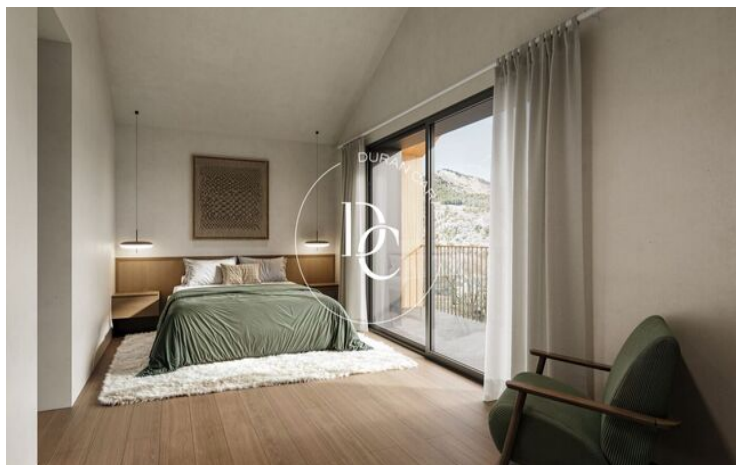
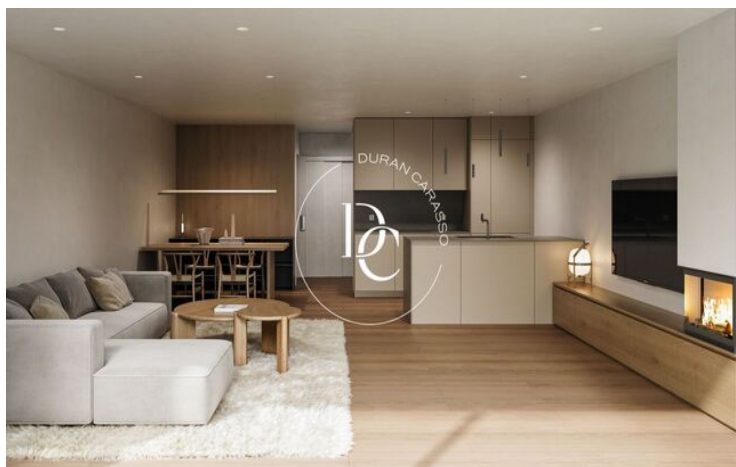
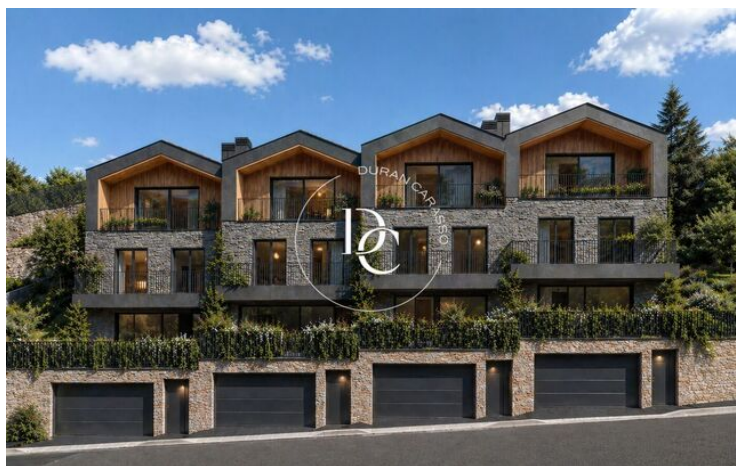
## Units in this development

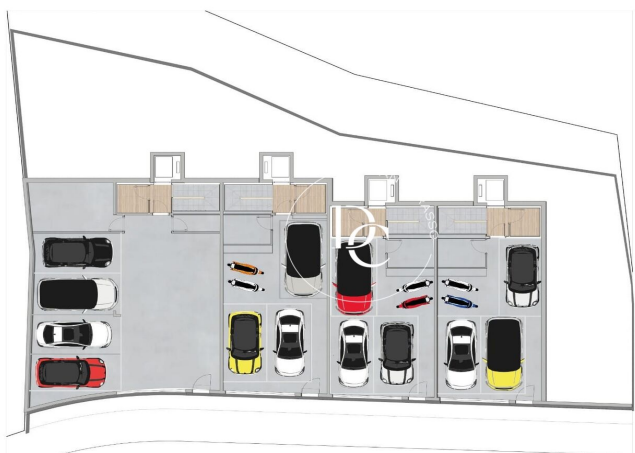
Type	House
Unit	1
Surface	M <sup>2</sup> 346
Terrace	M <sup>2</sup> 183
Plot Surface	M <sup>2</sup> 555
Bedrooms	3
Bathrooms	3
Price	€1,975,000
State	Available

Type	House
Unit	2
Surface	M <sup>2</sup> 270
Terrace	M <sup>2</sup> 57
Plot Surface	M <sup>2</sup> 351
Bedrooms	3
Bathrooms	3
Price	€1,750,000
State	Available

Type	House
Unit	3
Surface	M <sup>2</sup> 260
Terrace	M <sup>2</sup> 57
Plot Surface	M <sup>2</sup> 343
Bedrooms	3
Bathrooms	3
Price	€1,750,000
State	Available

Type	House
Unit	4
Surface	M <sup>2</sup> 273
Terrace	M <sup>2</sup> 138
Plot Surface	M <sup>2</sup> 437
Bedrooms	3
Bathrooms	3
Price	€1,870,000
State	Available





The data of each property is not part of an offer or a contract. Statements made by Durán Carasso Grupo Inmobiliario, verbally or in writing, regarding the property, its condition, or its value, should not be considered accurate or factual. The photographs only show specific parts of the property as they were at the time they were taken. The dimensions, areas, and distances provided are approximate and should be verified by the client. Computer-generated images are only an indication of the possible appearance of the property and may change at any time. Information regarding a property is subject to change at any time.

Contact us if you want more information or to arrange a viewing.