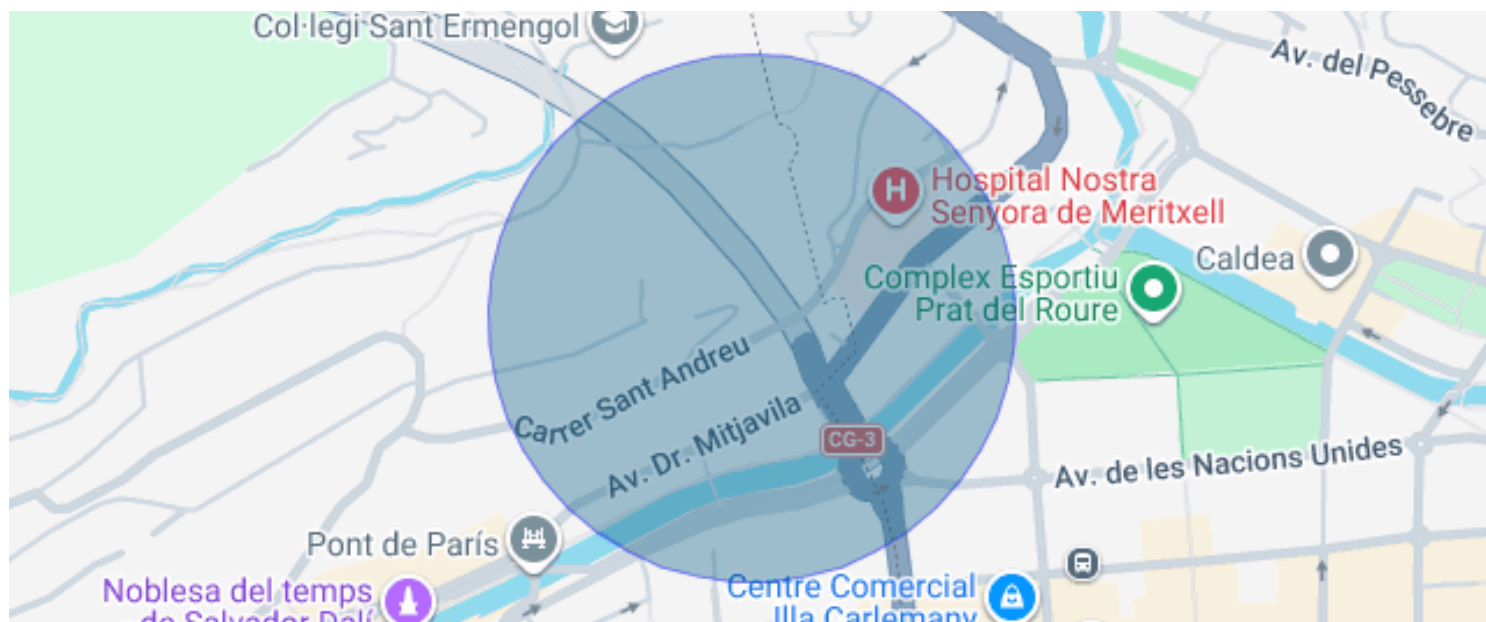




MAGNIFICENT SEMI-DETACHED CHALET FOR RENT IN SANT ANDREU

Les Escaldes / Escaldes - Engordany

Price	€6,000 / month	✓ Pets	✓ Heating
Sur. built	191 m ²	✓ Mountain views	✓ Backyard
Sur. util	191 m ²	✓ Storage	✓ Fireplace
Bedrooms	4	✓ Parking	✓ Terrace
Bathrooms	3	✓ Balcony	✓ Built in closets
Energy classification	Pending	✓ Outside	
Emissions rating	Pending		
Floor	pr		
Actual floor	4		



Les Escaldes / Escaldes - Engordany

Elegant semi-detached chalet located in the prestigious Sant Andreu Residential Area, Escaldes-Engordany in a privileged location that combines tranquility, privacy, and spectacular panoramic views over the entire Andorran valley. This exclusive property stands out for its traditional Andorran-style architecture, featuring an elegant natural stone façade combined with modern and functional interior finishes that provide comfort and warmth to every space.

The property offers an approximate usable surface area of 190.45 m² distributed over four perfectly differentiated levels, designed to provide spaciousness, comfort, and excellent natural light throughout the day thanks to its privileged orientation.

On the basement level, there is a pleasant multi-purpose area with direct access to a large private outdoor terrace, ideal as a relaxation space, chill-out area, or family zone to enjoy the surrounding nature and tranquility. The ground floor offers generous living spaces with a large and bright living-dining room, access to a balcony, and excellent open views, creating a warm and welcoming atmosphere.

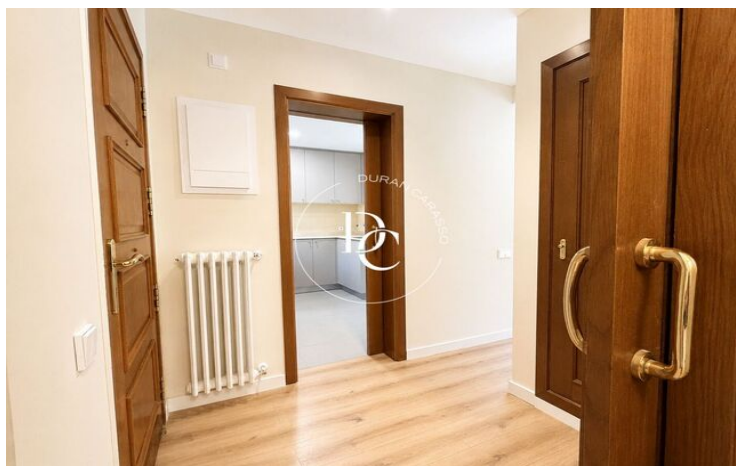
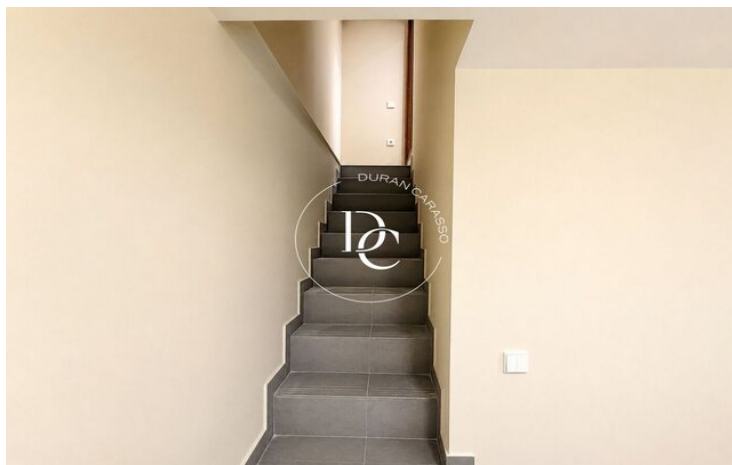
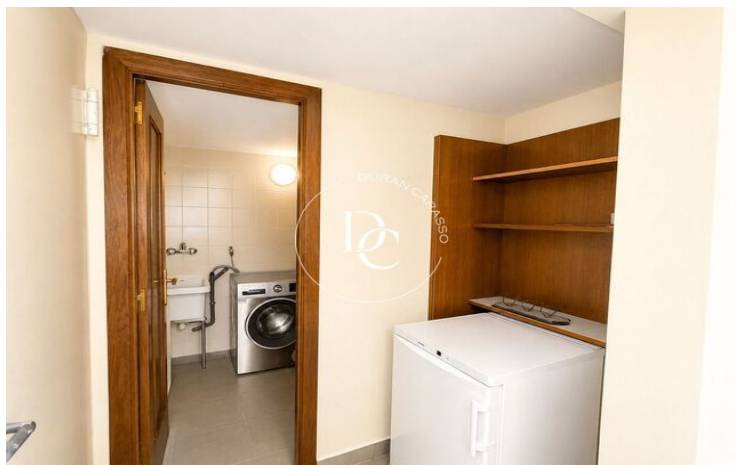
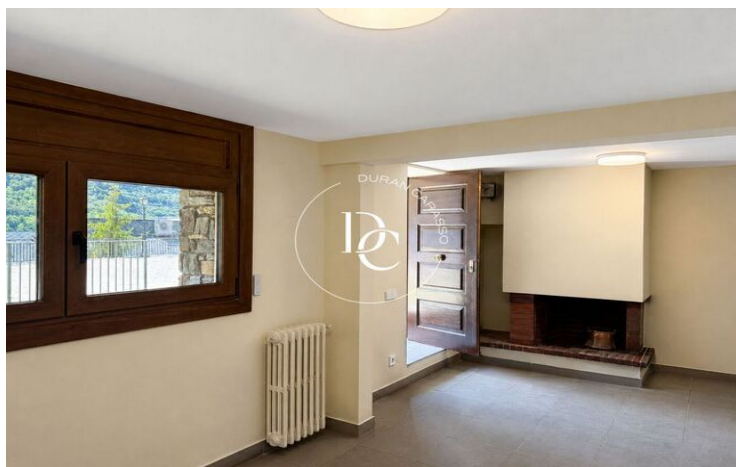
The kitchen, fully equipped with Teka appliances, combines functionality and design. It features formica furniture with high-capacity cabinets and drawers, a stainless steel sink, built-in extractor hood, 3-zone ceramic hob, oven, and pre-installation for a refrigerator and dishwasher, offering a practical and comfortable everyday living space.

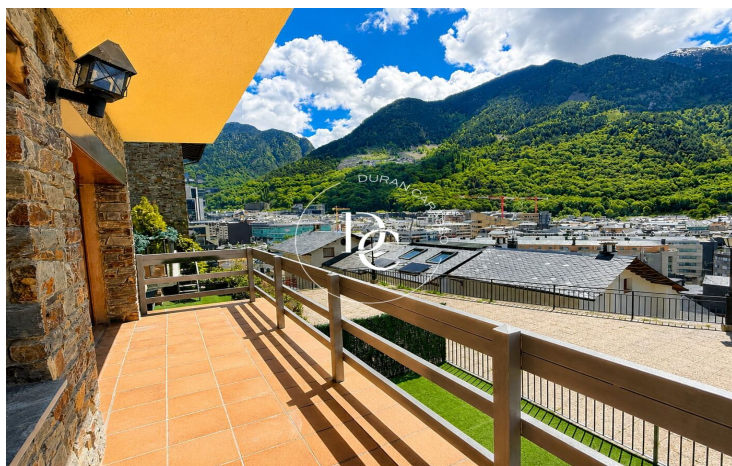
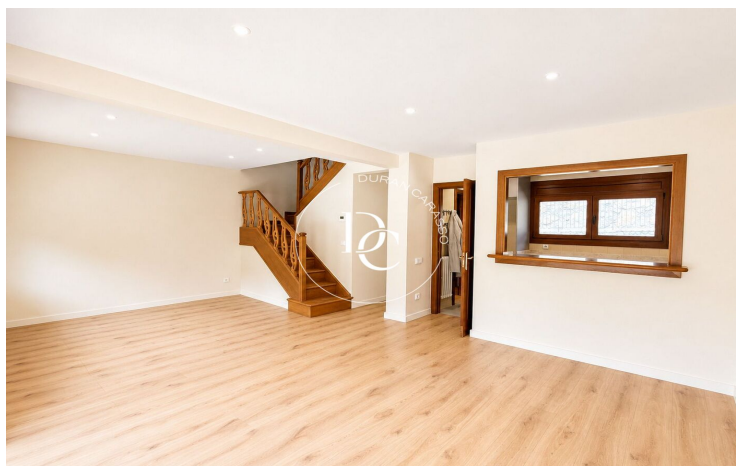
The night area, located on the first floor, includes three double bedrooms with built-in wardrobes, one of them being a suite, providing spaciousness and comfort. This floor is complemented by fully equipped bathrooms with shower, bathtub, and screens, featuring elegant and functional finishes. The attic adds a special charm to the property, offering a cozy space and magnificent views that make this level truly unique within the home.

Regarding the interior finishes, the chalet features parquet flooring that brings warmth and elegance, as well as dark cherry wood doors, reinforcing the welcoming and distinguished character of the property.

In terms of installations, the property is equipped with a centralized diesel boiler heating system for the building, with radiators fitted with thermostatic valves and white enamel finishes, ensuring thermal comfort throughout the year.

...





The data of each property is not part of an offer or a contract. Statements made by Durán Carasso Grupo Inmobiliario, verbally or in writing, regarding the property, its condition, or its value, should not be considered accurate or factual. The photographs only show specific parts of the property as they were at the time they were taken. The dimensions, areas, and distances provided are approximate and should be verified by the client. Computer-generated images are only an indication of the possible appearance of the property and may change at any time. Information regarding a property is subject to change at any time.

Contact us if you want more information or to arrange a viewing.