



CORNER TOWNHOUSE WITH STUNNING VIEWS OF GARRAF NATURAL PARK IN MAS MESTRE, OLIV...

Mas Mestre / Olivella

Price

€320,000

Sur. built	220 m²
Sur. util	134 m²
Bedrooms	4
Bathrooms	3
Energy classification	E
Energy performance index	295.00 kw h/m² year
Emissions rating	F
Emissions	62.00 co/m² year
Year of construction	2004

✓ Mountain views

✓ Parking

✓ Storage

✓ Terrace



Mas Mestre / Olivella

Located in the peaceful Mas Mestre residential area, just steps away from the municipal swimming pool, this corner townhouse offers the perfect blend of comfort, practicality, and natural surroundings.

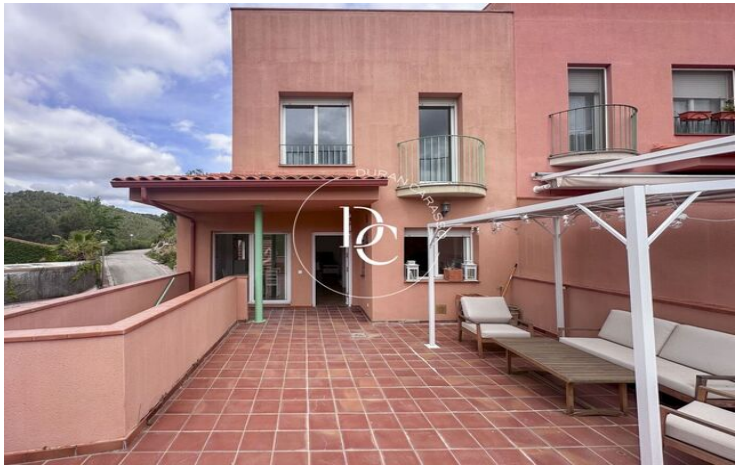
The home is spread across several levels and features 4 bedrooms, including a master suite, 2 full bathrooms, and a guest toilet on the main living floor. The independent kitchen is spacious and filled with natural light. Each level of the house enjoys its own terrace, allowing you to take in the open, panoramic views of the Garraf Natural Park from various angles.

While the property doesn't have a private pool, its close proximity to the public pool is a real advantage—ideal for summer enjoyment without the maintenance.

The house also includes private parking and is perfectly situated for those seeking tranquility without being far from Sant Pere de Ribes, Sitges, and all essential services.

A home designed to enjoy nature, light, and everyday comfort.

Interested? Come and see it, you'll love the surroundings.





The data of each property is not part of an offer or a contract. Statements made by Durán Carasso Grupo Inmobiliario, verbally or in writing, regarding the property, its condition, or its value, should not be considered accurate or factual. The photographs only show specific parts of the property as they were at the time they were taken. The dimensions, areas, and distances provided are approximate and should be verified by the client. Computer-generated images are only an indication of the possible appearance of the property and may change at any time. Information regarding a property is subject to change at any time.

Contact us if you want more information or to arrange a viewing.