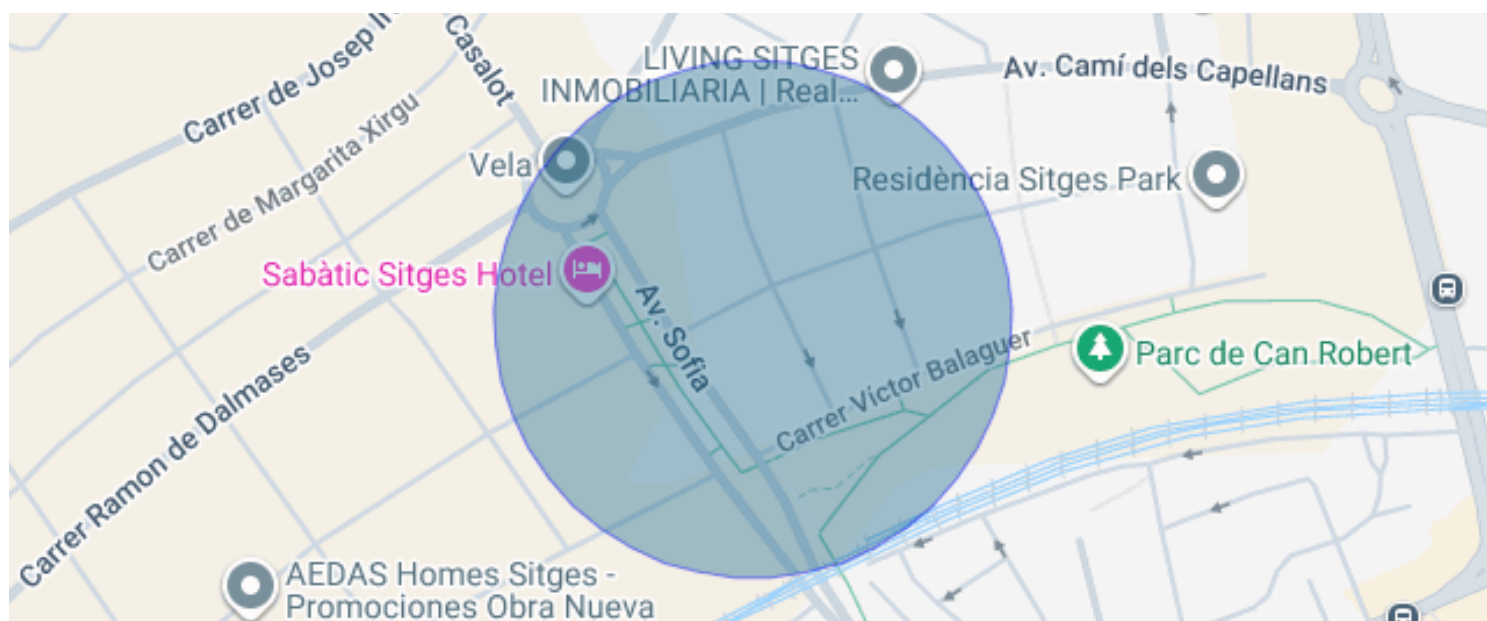


CONTEMPORARY APARTMENT WITH SEA VIEWS IN LA PLANA

La Plana / Sitges

Price	€975,000	✓ Pool	✓ Air conditioning
Sur. built	116 m ²	✓ Heating	✓ Sea views
Sur. util	90 m ²	✓ Mountain views	✓ Storage
Bedrooms	3	✓ Lift	✓ Parking
Bathrooms	2	✓ Terrace	✓ Built in closets
Energy classification	A	✓ Outside	✓ Community pool
Energy performance index	16.00 kw h/m ² year		
Emissions rating	A		
Emissions	2.00 co/m ² year		
Year of construction	2019		
Floor	3		



La Plana / Sitges

Contemporary elegance and Mediterranean living in La Plana, Sitges

Located in La Plana, one of the most sought-after residential addresses in Sitges, this recently built apartment embodies a contemporary vision of coastal comfort. Just minutes from the town center and beaches, and only 35 minutes from Barcelona, the property blends modern architecture, serenity and quality of life in a privileged setting.

Entirely exterior and positioned on a corner, the apartment enjoys exceptional natural light throughout the day. Open sea views and dual orientation create a bright, fluid atmosphere where indoor and outdoor living merge effortlessly.

The elegant and functional layout has been designed for comfortable and sophisticated living. The property features three bedrooms, including a refined principal suite with private bathroom, conceived as an intimate and serene retreat.

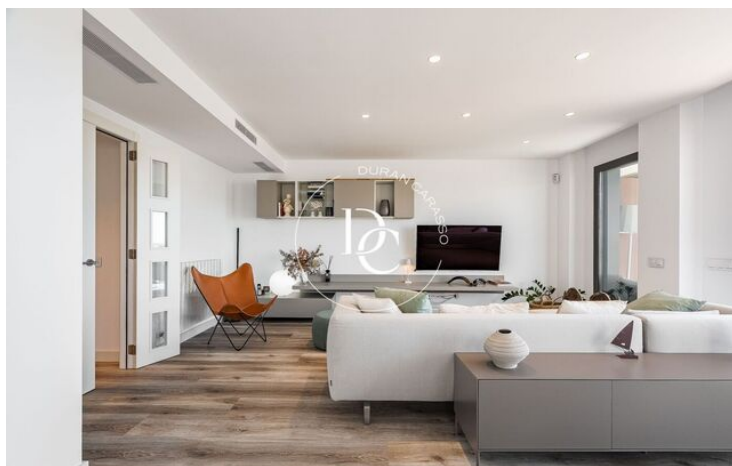
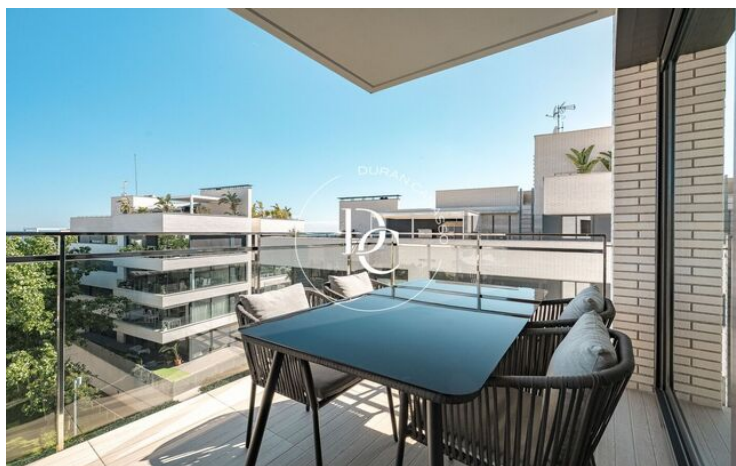
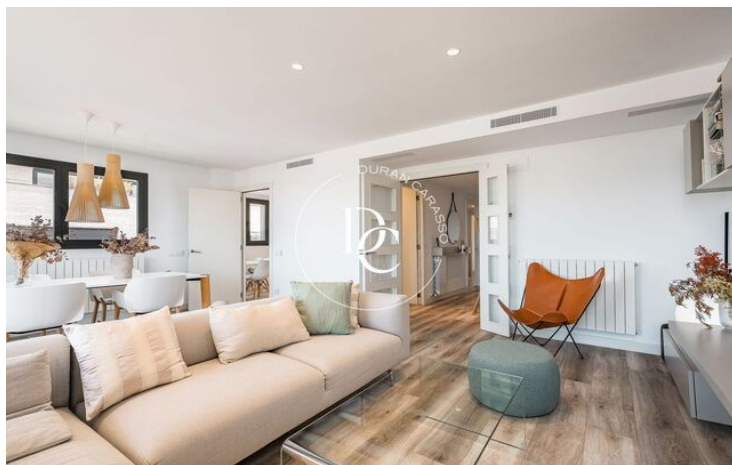
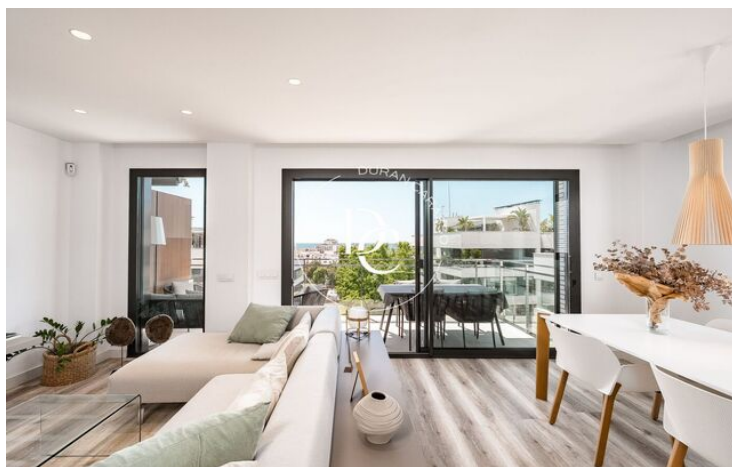
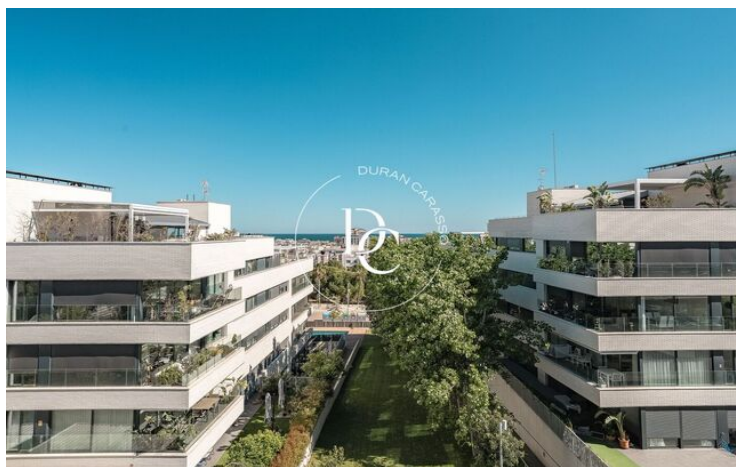
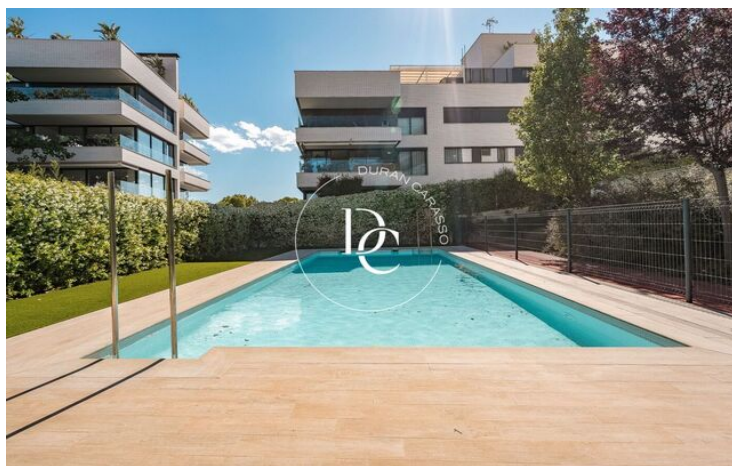
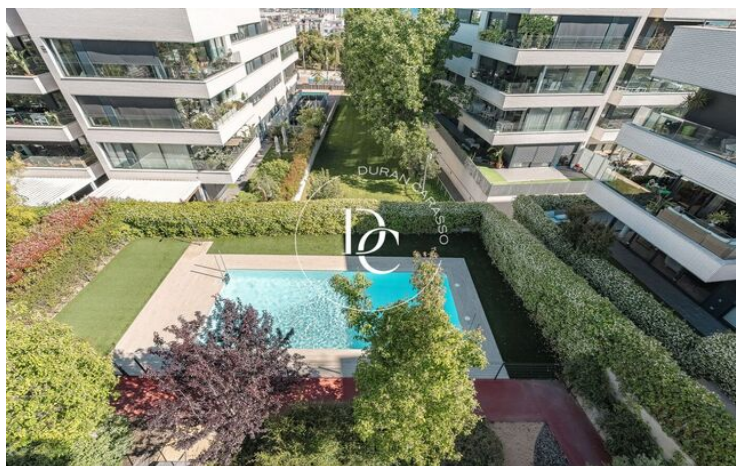
The living area opens generously onto the exterior, allowing Mediterranean light and gentle sea breezes to become part of everyday life. Every space conveys a sense of calm, balance and openness.

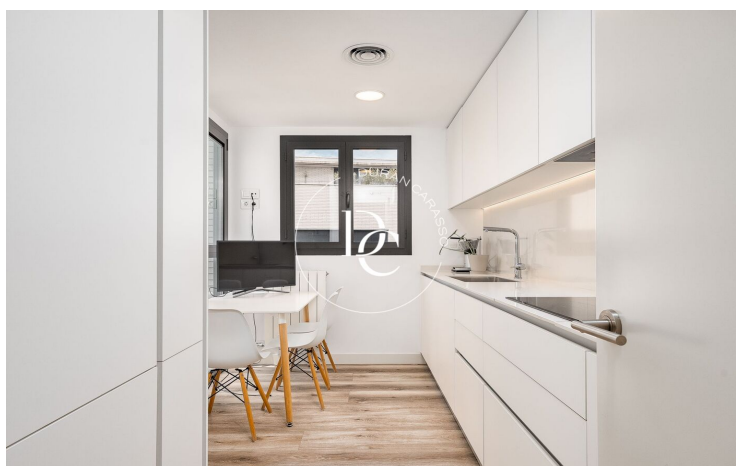
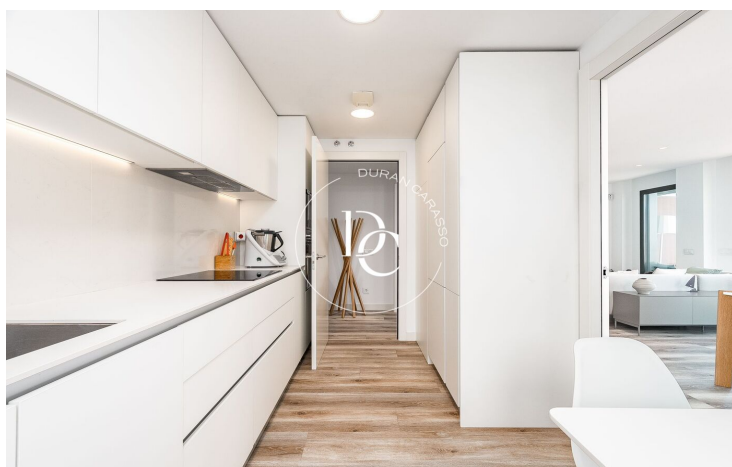
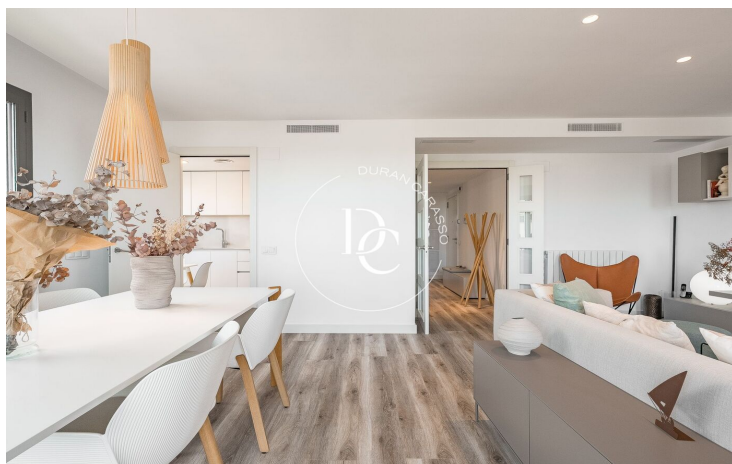
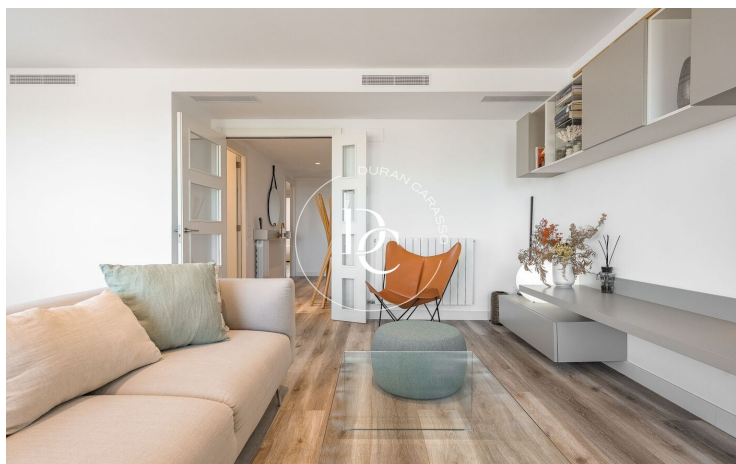
Built to high energy-efficiency standards, the property benefits from an A-rated energy certificate and an aérothermal system, ensuring sustainable comfort all year round.

The apartment also includes two spacious parking spaces with pre-installation for electric vehicles, as well as an exceptional 30 m² storage room — a highly valued feature in the area.

La Plana has established itself as one of Sitges' most desirable residential neighbourhoods thanks to its contemporary urban design, open spaces and proximity to both the sea and the historic centre. An environment designed for those seeking tranquillity, design and an authentic Mediterranean lifestyle.

Living in Sitges means choosing one of the Mediterranean coast's most desirable destinations — a place where authenticity, gastronomy, culture and international connectivity coexist in perfect harmony.





The data of each property is not part of an offer or a contract. Statements made by Durán Carasso Grupo Inmobiliario, verbally or in writing, regarding the property, its condition, or its value, should not be considered accurate or factual. The photographs only show specific parts of the property as they were at the time they were taken. The dimensions, areas, and distances provided are approximate and should be verified by the client. Computer-generated images are only an indication of the possible appearance of the property and may change at any time. Information regarding a property is subject to change at any time.

Contact us if you want more information or to arrange a viewing.