



## NEW-BUILD DETACHED HOUSE WITH POOL IN LA PLANA, SITGES

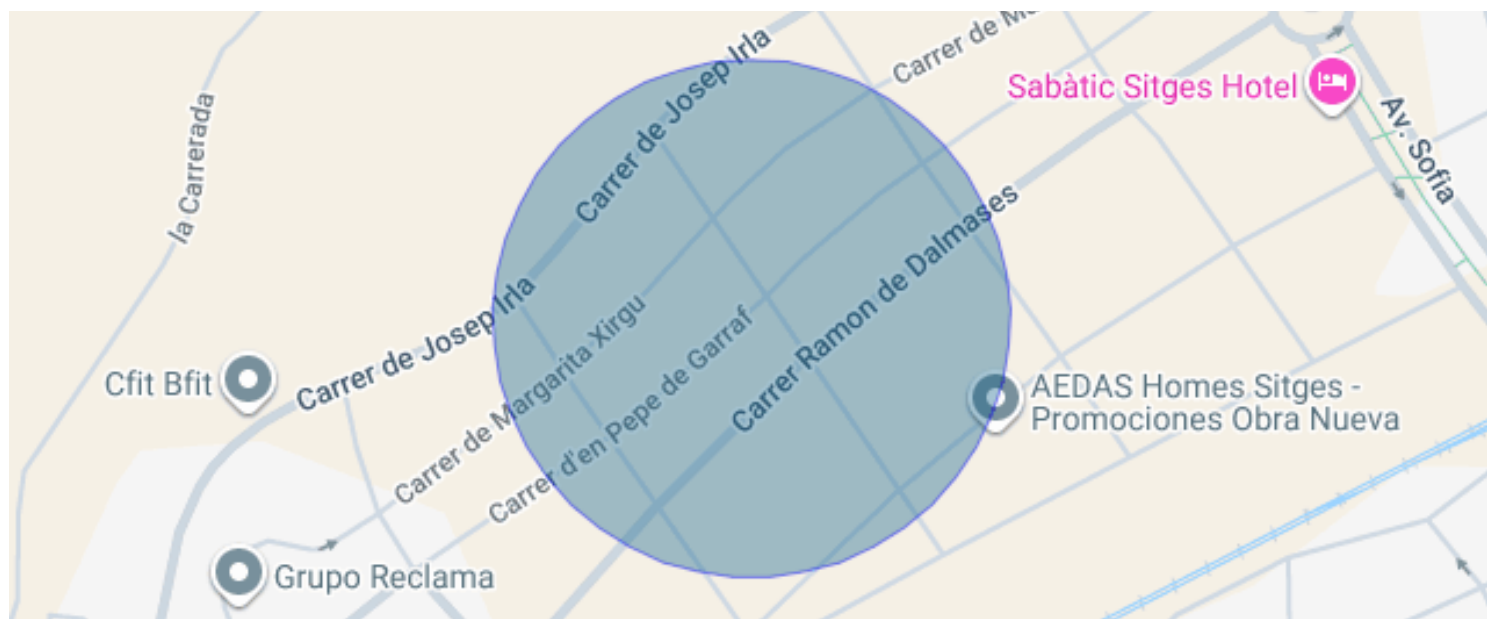
La Plana / Sitges

**PRICE UPON REQUEST**

Units

0

- ✓ Pool
- ✓ Heating
- ✓ Furnished
- ✓ Terrace
- ✓ Outside
- ✓ Air conditioning
- ✓ Backyard
- ✓ Parking
- ✓ Built in closets



## La Plana / Sitges

Durán Carasso presents this newly built detached house currently under construction, located in the second phase of La Plana, one of the most sought-after and high-potential residential areas in Sitges. A contemporary project designed to enjoy the Mediterranean lifestyle, with completion scheduled for April 2027.

The property sits on a 600 m<sup>2</sup> plot and will offer a built area of 435.97 m<sup>2</sup> distributed across ground floor, first floor and basement. Its south-facing orientation ensures excellent natural light throughout the day. In addition, its position within the second phase of La Plana provides a greater sense of openness and privacy compared to other plots in the area. The absence of a directly facing property and the open views towards the garden enhance the feeling of space and tranquillity that defines this home.

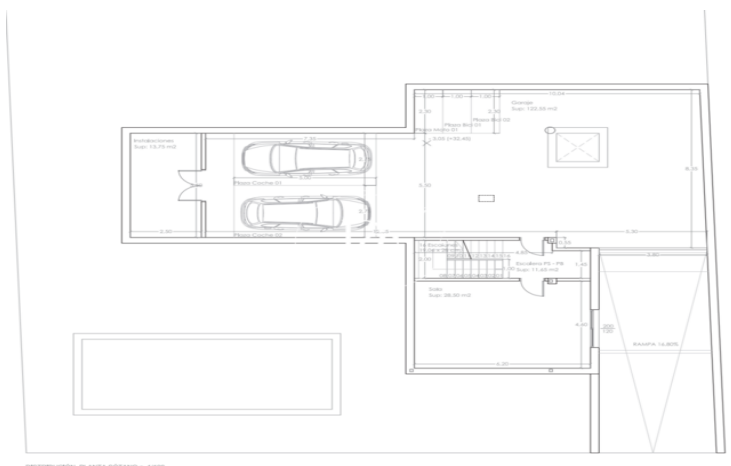
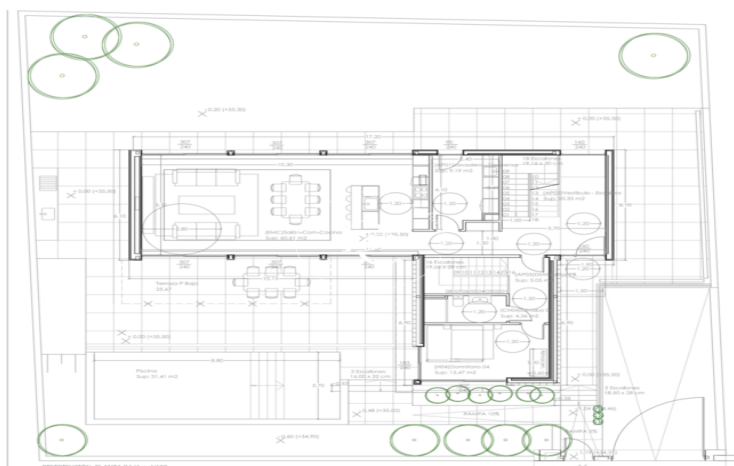
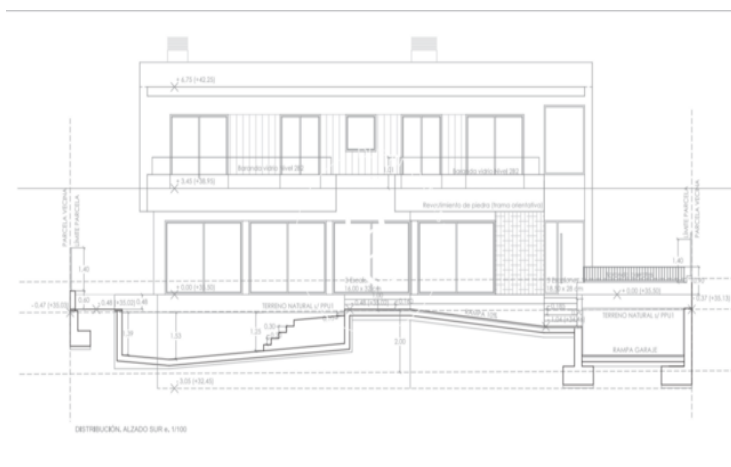
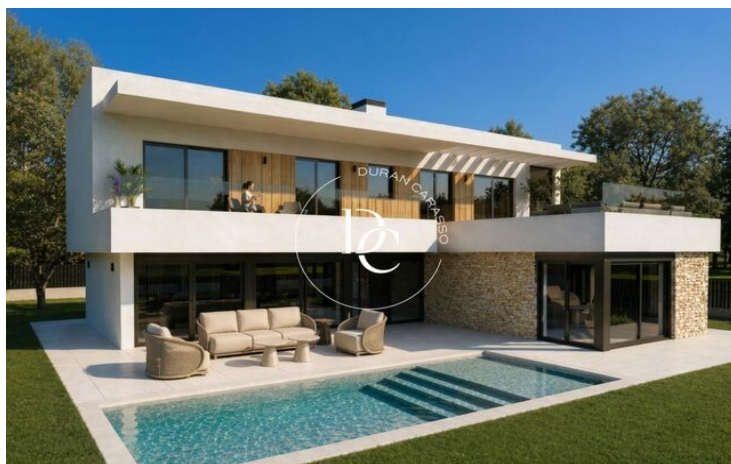
One of the most difficult features to find today in La Plana is a balanced combination of plot size, privacy and orientation. This property brings together these three elements in a privileged location within the neighbourhood, just a few minutes from the centre, the beaches and the seafront promenade of Sitges.

The main floor, with 142.70 m<sup>2</sup> built, is organised around a spacious living, dining and open kitchen area designed to ensure a seamless connection with the outdoors. Thanks to the generous plot size, the home enjoys a large south-facing private garden, conceived as a natural extension of the interior spaces. The 25.67 m<sup>2</sup> porch and approximately 30 m<sup>2</sup> swimming pool integrate perfectly into this outdoor setting, offering different areas for relaxation, family life and outdoor enjoyment throughout the year. This floor also includes a double bedroom, a full bathroom, pantry and separate laundry room.

The first floor accommodates the sleeping area, consisting of three double bedrooms and a master suite. The bedrooms enjoy access to two large terraces of 22.60 m<sup>2</sup> and 43.87 m<sup>2</sup>, designed to maximise orientation, privacy and the Mediterranean outdoor lifestyle.

The basement level, with over 200 m<sup>2</sup> built, includes a garage for two vehicles, a large multipurpose room with multiple uses—family space, gym, leisure area, office or cinema room—as well as technical and utility installations.

The project incorporates high-efficiency energy solutions, including aerothermal system, photovoltaic panels, under...



The data of each property is not part of an offer or a contract. Statements made by Durán Carasso Grupo Inmobiliario, verbally or in writing, regarding the property, its condition, or its value, should not be considered accurate or factual. The photographs only show specific parts of the property as they were at the time they were taken. The dimensions, areas, and distances provided are approximate and should be verified by the client. Computer-generated images are only an indication of the possible appearance of the property and may change at any time. Information regarding a property is subject to change at any time.

Contact us if you want more information or to arrange a viewing.